

Display Cabinet Display Controller

Operating Instructions

Before operating the unit, please read this manual and the supplied Before Using This Unit document thoroughly and retain it for future reference.

ZRD-C12A/ZRD-C15A/ZRD-B12A/ZRD-B15A
ZRCT-300

Table of Contents

Please Read This First	3
Manual Structure	3
Condensation	3
Security	3
Burn-in	3
Defective pixels	3
General Precautions	3
Precautions on viewing and displaying 3D images	4
Precautions on the environment when displaying 3D images	4
Precautions regarding the effect on medical devices	4
Precautions on visually induced motion sickness (VIMS) and staggering	4
Other precaution	5
Overview	6
System Configuration Diagram	6
Parts Identification	7
ZRD-C12A/ZRD-C15A/ZRD-B12A/ZRD- B15A Display Cabinet	7
ZRCT-300 Display Controller	8
Turning the Power On/Off	10
Turning the Power On	10
Turning the Power Off	11
Selecting the Video Input	12
Changing the Display Starting Positions of Pictures	13
Configuring the Input Level and Signal Format for HDMI Inputs	14
Displaying a Black Picture on the Screen	14
Adjusting the Picture Quality	15
Displaying 3D Video	17
Synchronizing with External Sync Signals	18
Inputting External Sync Signals	18
Enabling External Synchronization	18
Using Network Features	19
Displaying the Control Window of the Display Controller with a Web Browser	20
Setting the Control Protocol of the Display Controller	21
Troubleshooting	22
Error Codes	24
Display Cabinets	24
Display Controllers	25

Cleaning and Storage	26
Display Cabinets	26
Display Controllers	26
Signal Formats	26
2D Inputs	26
3D Inputs	27
Supported Signal Formats for a Single Controller	28
NOTICES AND LICENCES FOR SOFTWARE USED IN THIS PRODUCT	30

Trademarks

- Products or system names appearing in this document are trademarks or registered trademarks of their respective owners. Further, the ® or ™ symbols are not used in the text.
- The terms HDMI and HDMI High-Definition Multimedia Interface, and the HDMI Logo are trademarks or registered trademarks of HDMI Licensing Administrator, Inc. in the United States and other countries.
- DisplayPort is a trademark or registered trademark of Video Electronics Standards Association in the United States and other countries.

- Reproduction or duplication, in whole or part, of the operation manual supplied with the system without the authorization of the right holder is prohibited under copyright law.
 - Note that the specifications of the system are subject to change for improvement without prior notice.

Please Read This First

Manual Structure

This product includes the following manuals to be used according to the situation.

Before Using This Unit (ZRD-C12A/ZRD-C15A/ZRD-B12A/ZRD-B15A, ZRCT-300)

This includes important safety precautions, specifications, etc.

Installation Manual

This includes information on installation, initial setup, equipment adjustment procedures, etc. Refer to this manual when changing equipment settings or performing readjustments after installation as well.

Operating Instructions (this document)

This includes information on video input selection, picture quality adjustment, parts identification, etc. Refer to this manual when performing general operations.

Service Manual

This is intended for use by service personnel and includes information on diagnosing malfunctions and instructions on repair.

Condensation

If the unit is suddenly taken from a cold to a warm location, or if ambient temperature suddenly rises, moisture may form on the outer surface of the unit and/or inside of the unit. This is known as condensation. If condensation occurs, turn off the unit and wait until the condensation clears before operating the unit. Operating the unit while condensation is present may damage the unit.

Security

- SONY WILL NOT BE LIABLE FOR DAMAGES OF ANY KIND RESULTING FROM A FAILURE TO IMPLEMENT PROPER SECURITY MEASURES ON TRANSMISSION DEVICES, UNAVOIDABLE DATA LEAKS RESULTING FROM TRANSMISSION SPECIFICATIONS, OR SECURITY PROBLEMS OF ANY KIND.
- Depending on the operating environment, unauthorized third parties on the network may be able to access the unit. When connecting

the unit to the network, be sure to confirm that the network is protected securely.

- This unit is equipped with a maintenance function performed via a network. Maintenance may be performed with your consent.
- From a safety standpoint, when using the unit connected with the network, it is strongly recommended to access the Control window via a Web browser and change the access limitation settings from the factory preset values. Also, it is recommended that you set a password with a sufficiently long character string that is hard to guess by others, and that you store it safely.
- Do not browse any other website in the Web browser while making settings or after making settings. Since the login status remains in the Web browser, close the Web browser when you complete the settings to prevent unauthorized third parties from using the unit or harmful programs from running.
- When connecting this product to a network, connect via a system that provides a protection function, such as a router or firewall. If connected without such protection, security issues may occur.

Burn-in

Permanent burn-in may occur if a still image is displayed for a prolonged period of time. Playing a video with moving images may reduce the severity of burn-in once it occurs, but it will not remove the burn-in completely.

Defective pixels

Thus a very small proportion of pixels may be "stuck," either always off (black), always on (red, green, or blue), or flashing. In addition, such "stuck" pixels may appear spontaneously over a long period of use due to the physical characteristics of the organic light-emitting diodes.

Such occurrences do not indicate a malfunction.

General Precautions

- Avoid getting the product wet. In the event of accidental contact with liquids, do not turn on the power, and contact a service representative.

- If an error or malfunction occurs or if foreign matter enters the interior of the product, turn off the power and discontinue use, and contact a service representative.
- Do not subject the front panel of the Display Cabinets to damage or shocks.
- Request cleaning and maintenance periodically from a service representative.

Precautions on viewing and displaying 3D images

- You should only use the 3D glasses for watching 3D video images.
- While watching 3D images, a viewer may experience unpleasant symptoms such as eye fatigue, tiredness, and feeling sick. When watching 3D images, it is advisable to take breaks periodically. The length and frequency of the necessary breaks will vary depending on the content being displayed and the physical condition of the viewer. If the viewer watching 3D images experiences any unpleasant symptoms, stop watching 3D images until the viewer recovers, and consider recommending that the viewer consult a doctor if necessary. Note that the vision of children (especially those under 6 years old) is still in the developmental stage. Adults should supervise their children to ensure that they are following the above precautions. If the content is watched at a closer distance than expected, the fatigue and other effects described above may be more pronounced. Take measures such as considering the length, content, and interval of the displayed content, and posting of warning signs.
- Not for viewing by children without proper adult supervision.

Precautions on the environment when displaying 3D images

Flickering or flashing lights may be seen when using 3D glasses under some fluorescent lights or LED bulbs. Very rarely, this flickering or flashing light may cause symptoms of light-sensitive seizures such as convulsions or fainting. This flickering or flashing light may cause symptoms of convulsions or fainting, even in those who have never experienced such symptoms before.

Do not turn on these lights (light sources) when using 3D glasses. Be sure to inform the contractor who undertakes the installation or maintenance work about these effects.

Precautions regarding the effect on medical devices

The display cabinet uses strong magnets. There are areas where the magnetic flux density is likely to be 300 mT or more on the surface that is touched during installation or maintenance work. This may seriously affect medical devices such as defibrillators, pacemakers, and variable pressure shunts to treat hydrocephalus. Keep users of these medical devices away from areas where installation and maintenance work is being performed or where display cabinets are stored. There is also magnetic flux leakage from the viewing surface, which may affect users of these medical devices when they approach the display cabinet. Take measures such as posting warning signs depending on the installation conditions. Be sure to inform the contractor who undertakes the installation or maintenance work about these effects.

Precautions on visually induced motion sickness (VIMS) and staggering

Depending on the displayed content, display size, and viewing location (distance), a viewer may experience VIMS symptoms such as staggering or nausea. The symptoms of VIMS may be more pronounced after some time rather than during or immediately after viewing. Take measures such as posting warning signs. Furthermore, the movement of a wide part of the image to the same direction may induce staggering. Pay close attention to the displayed contents and installation location (direction) when installing the product in a position where it can be seen from stairs, escalators, landings, or other places that are considered dangerous when staggering.

Other precaution

- The life expectancy of the electrolytic capacitor is about 5 years under normal operating temperatures and normal usage (8 hours per day; 25 days per month). If usage exceeds the above normal usage frequency, the life expectancy may be reduced correspondingly.
- The fan is a consumable part that will need periodic replacement.
When operating at room temperature, a normal replacement cycle will be about 4 years.
However, this replacement cycle represents only a general guideline and does not imply that the life expectancy of this part is guaranteed. For details on parts replacement, contact your dealer. (ZRCT-300 only)

Notes

- Always verify that the unit is operating properly before use. SONY WILL NOT BE LIABLE FOR DAMAGES OF ANY KIND INCLUDING, BUT NOT LIMITED TO, COMPENSATION OR REIMBURSEMENT ON ACCOUNT OF THE LOSS OF PRESENT OR PROSPECTIVE PROFITS DUE TO FAILURE OF THIS UNIT, EITHER DURING THE WARRANTY PERIOD OR AFTER EXPIRATION OF THE WARRANTY, OR FOR ANY OTHER REASON WHATSOEVER.
- SONY WILL NOT BE LIABLE FOR CLAIMS OF ANY KIND MADE BY USERS OF THIS UNIT OR MADE BY THIRD PARTIES.
- SONY WILL NOT BE LIABLE FOR THE TERMINATION OR DISCONTINUATION OF ANY SERVICES RELATED TO THIS UNIT THAT MAY RESULT DUE TO CIRCUMSTANCES OF ANY KIND.

Overview

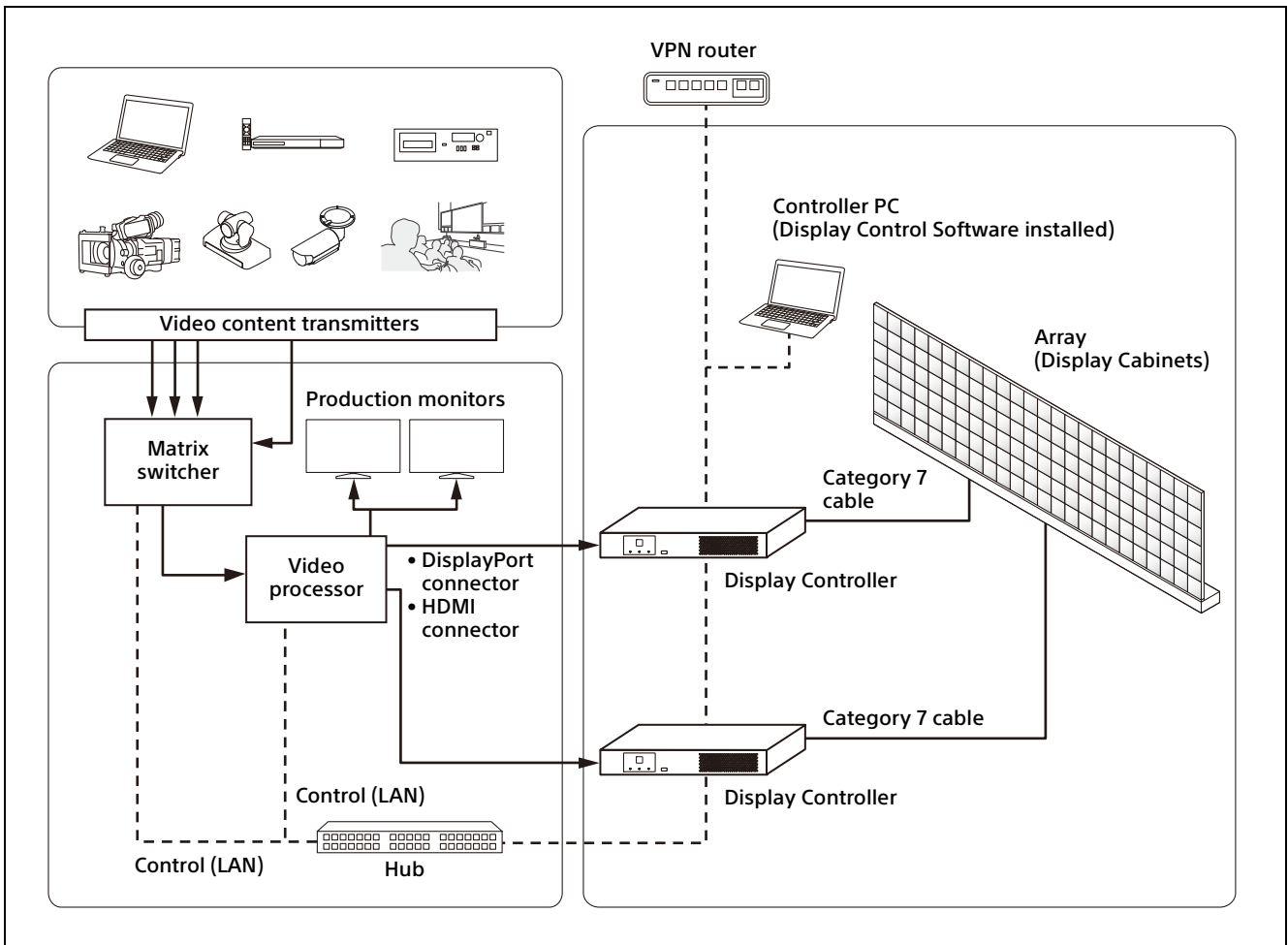
You can connect the Display Cabinets based on the installation location and intended use, convert the video content signals that are input to the Display Controller based on the array size, and output the signals onto the Display Cabinets. 4K2K video can be controlled via a single display controller. Control of the Display Cabinets is performed from a computer on which Display Control Software is installed. Daisy-chain connections can be configured between Display Cabinets using a power cord (not supplied) and a Category 7 cable (not supplied). (For details on the number of Display Cabinets that can be connected, refer to the Installation Manual.)

Caution

When connecting the Display Controller to a network, use a network that is built to control and regulate access from the Internet, such as a LAN. Direct connection from the Internet increases security risk.

System Configuration Diagram

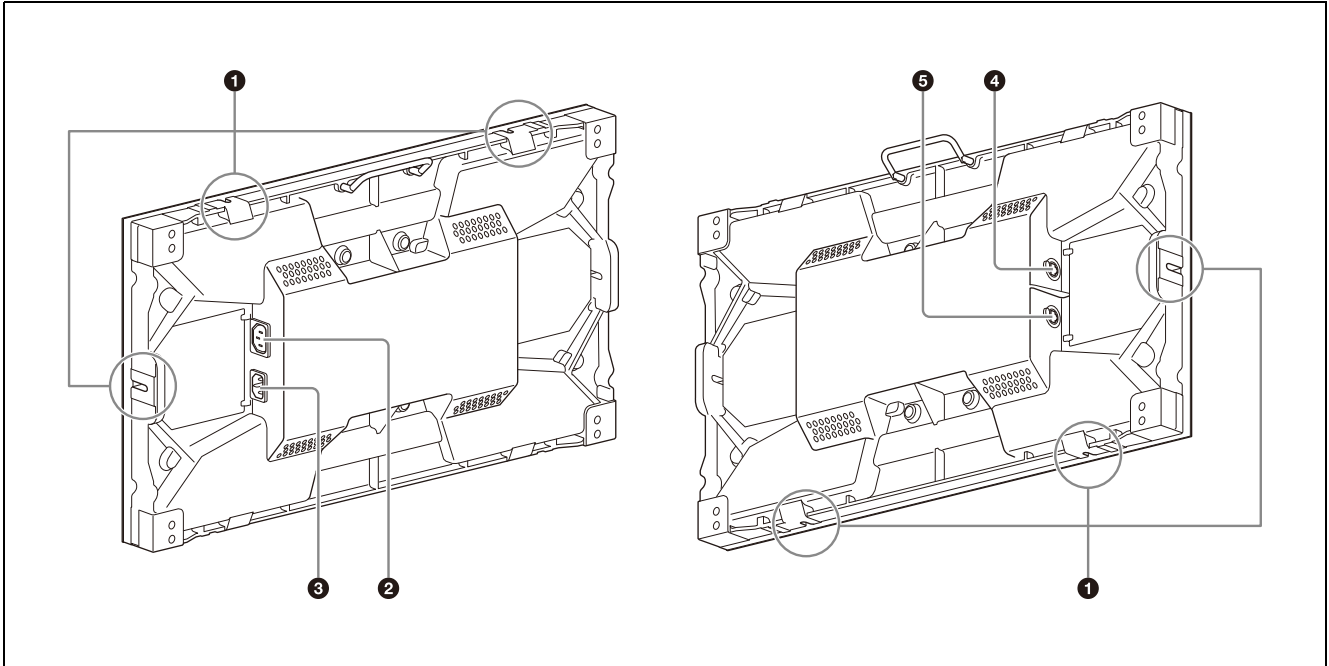
Configuration example of the entire system



Parts Identification

ZRD-C12A/ZRD-C15A/ZRD-B12A/ZRD-B15A Display Cabinet

Left / Right



Caution

Do not connect the OUT and IN connectors to a hub. The input/output signals for these connectors are unique to the product and are not Ethernet signals. In particular, be aware that connecting these connectors to a PoE injector hub may result in damage to the product.

1 Cabinet joints

Connect to other Display Cabinets.
There is one cabinet joint on the right side, one on the left side, two on top, and two on the bottom.

2 ~ OUT (AC power output) connector

Use a power cord (not supplied) to connect this connector to the ~ IN (AC power input) connector on the succeeding Display Cabinet in the daisy-chain connection.
This connector is not used for the last Display Cabinet in the daisy-chain connection.

3 ~ IN (AC power input) connector

Use a power cord (not supplied) to connect this connector to the ~ OUT (AC power output) connector on the preceding Display Cabinet in the daisy-chain connection.
For the first Display Cabinet in the daisy-chain connection, use a power cord (not supplied) to connect this connector to the circuit breaker.

4 OUT (cabinet output) connector (RJ-45)

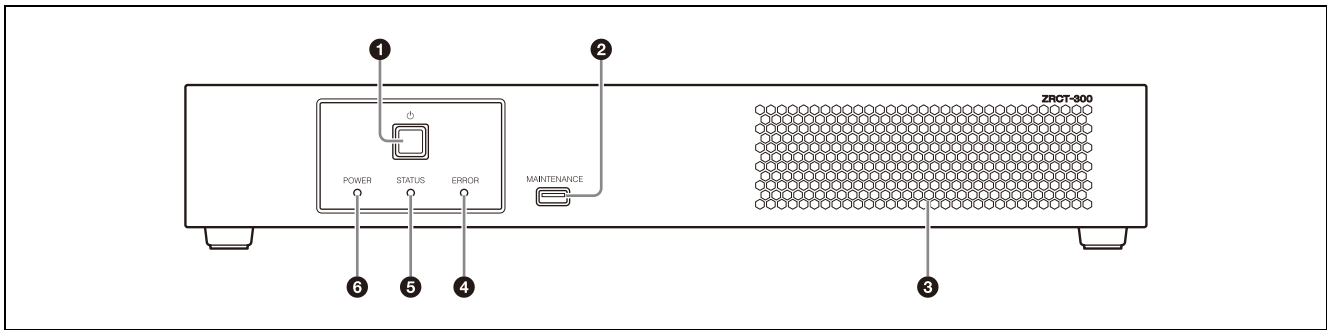
Use a Category 7 cable (not supplied) to connect this connector to the IN (cabinet input) connector on the succeeding Display Cabinet in the daisy-chain connection.
This connector is not used for the last Display Cabinet in the daisy-chain connection.

- 5 **IN (cabinet input) connector (RJ-45)**
Use a Category 7 cable (not supplied) to connect this connector to the OUT (cabinet output) connector on the preceding Display Cabinet in the daisy-chain connection.

For the first Display Cabinet in the daisy-chain connection, use a Category 7 cable (not supplied) to connect this connector to the OUTPUT connector on the Display Controller.

ZRCT-300 Display Controller

Front



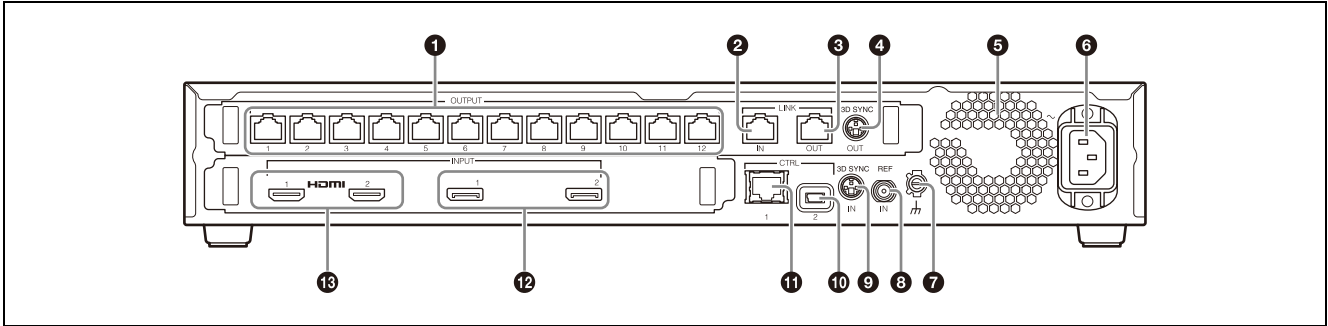
- 1 **(power) switch**
Turns the Display Controller on/off.
◆ For details, see "Turning the Power On/Off" (page 10).
- 2 **MAINTENANCE connector (USB, Type A)**
This connector is used for maintenance servicing.
- 3 **Intake vent**
Do not block the intake vent, as doing so will result in interior heat buildup which may result in fire or malfunction.
- 4 **ERROR indicator**
Blinks when warnings occur, and lights when errors occur.
◆ For details, see "Troubleshooting" (page 22) and "Error Codes" (page 24).
- 5 **STATUS indicator**
Indicates the power status of the Display Cabinets.
The indicator lights green when all the Display Cabinets that are connected to the Display Controller according to the Display Cabinet layout settings are turned on. If any of the Display Cabinets are turned off according to the Display Cabinet layout settings, the indicator turns off.

◆ For details on the Display Cabinet layout settings, consult your system administrator.

- 6 **POWER indicator**
Indicates the power status of the Display Controller.

Indicator	Status
Off	The Display Controller is turned off.
Lit orange	The Display Controller is in standby mode.
Lit green	The Display Controller is turned on (normal operating status).
Blinking green	The Display Controller is starting up or shutting down.
Lit red	The forced standby mode has been entered. ◆ For details, see "Entering the forced standby mode" (page 23) in the "Troubleshooting."

Rear



Caution

Do not connect the OUTPUT, LINK IN, and LINK OUT connectors to a hub. The input/output signals for these connectors are unique to the product and are not Ethernet signals. In particular, be aware that connecting these connectors to a PoE injector hub may result in damage to the product.

- ❶ **OUTPUT connectors 1 to 12 (RJ-45)**
Use a Category 7 cable (not supplied) to connect this connector to the IN (cabinet input) connector on the Display Cabinet you want to control (first Display Cabinet in the daisy-chain connection).
- ❷ **LINK IN connector (RJ-45)**
Use this when using multiple Display Controllers to control the Display Cabinets. Use a Category 7 cable (not supplied) to connect this connector to the LINK OUT connector on the Display Controller you want to link.
- ❸ **LINK OUT connector (RJ-45)**
Use this when using multiple Display Controllers to control the Display Cabinets. Use a Category 7 cable (not supplied) to connect this connector to the LINK IN connector on the Display Controller you want to link.
- ❹ **3D SYNC OUT connector (mini-DIN, 3-pin)**
Outputs 3D sync signals.

- ❺ **Exhaust vent/fan**
Do not block the exhaust vent, as doing so will result in interior heat buildup which may result in fire or malfunction.
- ❻ **~ IN (AC power input) connector**
Use a power cord (not supplied) to connect this connector to the circuit breaker.
- ❼ **⏏ (earth) terminal**
Connect this to the earth conductor of the system.

Caution

Failure to connect the system to the protective earth may result in electric shock. Be sure to connect to the earth conductor, even during operation inspections.

- ❽ **REF IN (external reference signal input) connector (BNC)**
Inputs external reference signals used for synchronization. For details, refer to the Installation Manual.
- ❾ **3D SYNC IN connector (mini-DIN, 3-pin)**
Inputs 3D sync signals.
- ❿ **CTRL (control) connector 2 (Mini-USB, Type B)**
Use this to connect to the controller PC via a USB (SERIAL) connection. Use a USB cable (not supplied) to connect this to a USB port on the controller PC.
- ⓫ **CTRL (control) connector 1 (RJ-45)**
Use this to connect to the controller PC via an Ethernet (LAN) connection. Use an Ethernet cable (Category 5, not supplied) to connect this to a LAN port on the controller PC.

12 DisplayPort (video input) connectors 1 and 2

Connect these to the video processor.

13 HDMI (video input) connectors 1 and 2

Connect these to the video processor.

Caution

When inputting 4K-equivalent HDMI signals, use a cable that is marked with the Premium High Speed HDMI logo and is within 3 m in length.

We recommend using Premium High Speed HDMI cables that are within 3 m in length even when you are not inputting 4K-equivalent HDMI signals.

Turning the Power On/Off

Turning the Power On

You can turn on the system's power using one of three methods. Consult your system administrator regarding which method to use.

- Turning the power on via the Display Controller
- Turning the power on via Display Control Software
- Turning the power on by connecting the power cord to the Display Controller

Caution

Always connect the Display Cabinet's power cord to the circuit breaker.

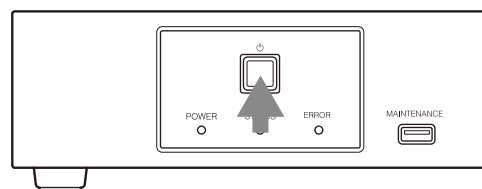
If pictures are not displayed within 5 minutes of turning on the system's power, try turning the system's power off and then on again.

Note

If a startup delay is configured in the [Function] - [System Settings] - [Cabinet Power On Delay] setting of Display Control Software, the Display Cabinets will turn on according to the configured delay.

Turning the power on via the Display Controller

- 1 Press and hold the power switch on the Display Controller for about 2 seconds.** Turn on all the Display Controllers by pressing each of their power switches.



When a Display Controller turns on, its POWER indicator lights green.
When a Display Cabinet turns on, its STATUS indicator lights green.

To enter standby mode

Press the power switch on a Display Controller twice to set the Display Controller and Display Cabinets to standby mode. To return to the power ON state, press the power switch again.

Note

If you press the power switch only once in the power ON state, the POWER indicator will blink red for 2 seconds, but the standby mode will not be entered. You can enter standby mode by pressing the power switch again while the indicator is still blinking red.

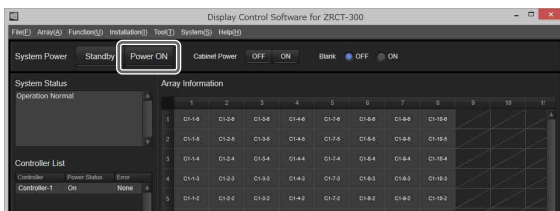
2 Turn on the video source equipment.

Turning the power on via Display Control Software

The initial settings must be configured beforehand to turn the power on via Display Control Software. For details, consult your system administrator.

1 Start the controller PC, and start Display Control Software.

2 Click [Power ON] in the main screen.



Under default settings, all Display Controllers and Display Cabinets will turn on. When a Display Controller turns on, its POWER indicator lights green. When a Display Cabinet turns on, its STATUS indicator lights green.

When you click [Standby]

The power status of all connected Display Controllers and Display Cabinets will enter standby mode, and the main screen will remain displayed. Click [Power ON] to turn the power on again.

3 Turn on the video source equipment.

Turning the power on by connecting the power cord to the Display Controller

When [Function] - [System Settings] - [Direct Array Power On] is set to [ON] in Display Control Software beforehand, simply connecting the Display Controller's power cord will turn on the Display Controller and Display Cabinets.

1 Connect the power cord to the ~ IN connector on the Display Controller.

When a Display Controller turns on, its POWER indicator will switch from blinking red/orange to remaining lit green.

When a Display Cabinet turns on, its STATUS indicator lights green.

2 Turn on the video source equipment.

Turning the Power Off

You can turn off the system's power using one of two methods.

- Turning the power off via the Display Controller
- Turning the power off via Display Control Software

Turning the power off via the Display Controller

1 Turn off the video source equipment.

2 Press the power switch on the Display Controller twice.

The Display Controller and Display Cabinets will enter standby mode.

3 If necessary, disconnect the AC power supply.

Turning the power off via Display Control Software

1 Turn off the video source equipment.

2 Click [Standby] in the main screen of Display Control Software.

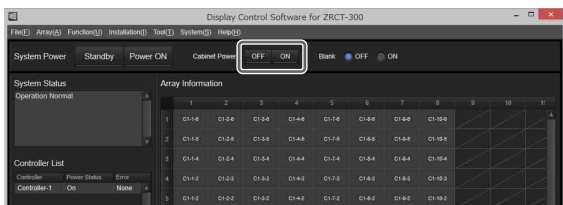
The Display Controller and Display Cabinets will enter standby mode.

3 If necessary, disconnect the AC power supply.

Setting only the power of the Display Cabinet to standby mode

You can set only the power of the Display Cabinet to standby mode without disconnecting the video signal transmitter and the Display Controller. It is only valid when the system is turned on.

Click [OFF] in [Cabinet Power] on the main screen of Display Control Software. If [ON] is selected, the Display Cabinet will turn on.



Turning the power off automatically

When [Function] - [System Settings] - [Auto Power Saving] is set to [ON] in Display Control Software and no signal is detected from the selected input, the Display Controller and Display Cabinets enter standby mode.

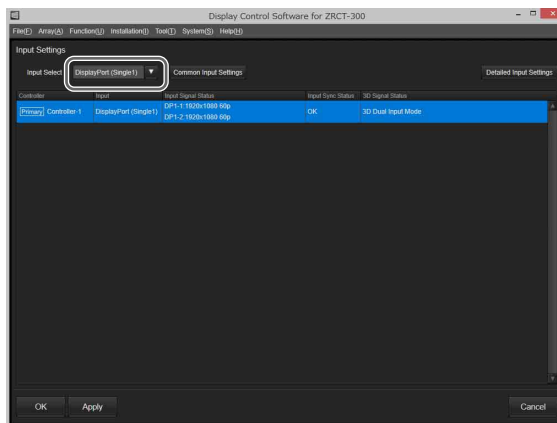
Selecting the Video Input

Select the video signals that will be input. The settings configured on the primary controller will be applied to all the other Display Controllers, including the subordinate controllers (hereafter referred to as "sub controllers"). Sub controllers cannot be configured individually.

Caution

If the a primary controller is not configured via Display Control Software or the primary controller is not turned on at the time the [Input Settings] screen is displayed, video input selection cannot be performed. In addition, the video input settings will not be applied to the sub controllers if they are not turned on.

- 1 Select [Input Settings] in the [Array] menu on the main screen of Display Control Software.
- 2 Select the input channel in [Input Select], and click [OK] or [Apply].
The video input changes.



[HDMI1]: Use HDMI connector 1 to display pictures.

[HDMI2]: Use HDMI connector 2 to display pictures.

[DisplayPort (Single1)]: Use DisplayPort connector 1 to display the picture.

[DisplayPort (Single2)]: Use DisplayPort connector 2 to display the picture.

- ◆ For details on the supported video signals for display, see "Signal Formats" (page 26).

[DisplayPort (Dual)]: Use two DisplayPort connectors to display pictures as large as 4K 100p/120p.

Note

If you are only inputting single-stream signals that are 50p/60p or lower, we recommend clicking [Detailed Input Settings] and clearing the [High Frame Rate Mode] checkbox in the [Detailed Input Settings] screen.

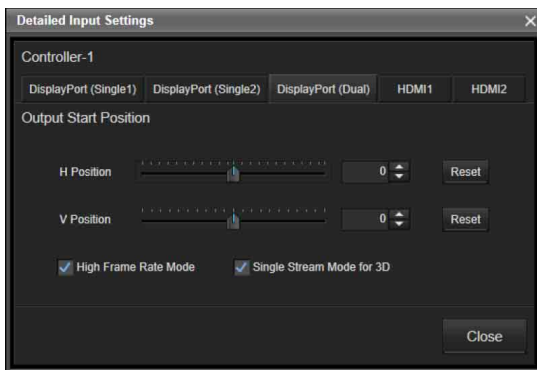
- 3 Click [OK] or [Apply] to apply the settings.**
The setting values will be registered to the Display Controller and saved to Display Control Software.

Changing the Display Starting Positions of Pictures

You can change the display positions for each picture.

For example, you can move a low-resolution picture from the top left of the screen to the center.

- 1 Click [Detailed Input Settings] in the [Input Settings] screen.**
The [Detailed Input Settings] screen appears.



- 2 Click the tab ([DisplayPort (Single1)], [DisplayPort (Single2)], [DisplayPort (Dual)], [HDMI1], or [HDMI2]) of the video signal for which you want to change the display starting position.**
- 3 Use the sliders and [Reset] buttons for [H Position] and [V Position] to specify the horizontal and vertical positions.**
The settings are reflected in the picture immediately after they are configured. For details, refer to the Installation Manual.

- 4 Click [Close].**
The [Detailed Input Settings] screen closes.

Configuring the Input Level and Signal Format for HDMI Inputs

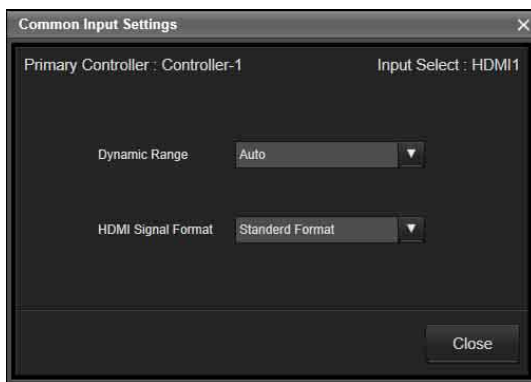
- 1 Select [HDMI1] or [HDMI2] for [Input Select] in the [Input Settings] screen, and click [OK] or [Apply].

The video input changes.

- 2 Click [Common Input Settings].

The [Common Input Settings] screen appears.

The settings configured on the primary controller will be applied to all the other Display Controllers, including the sub controllers. Sub controllers cannot be configured individually.



- 3 Configure each setting.

[Dynamic Range]: Select the video input level for HDMI connectors 1 and 2.

- [Auto]: Determine the video input level automatically.
- [Limited]: Select this when the video input level is between 16 to 235.
- [Full]: Select this when the video input level is between 0 to 255.

[HDMI Signal Format]: Select the video signal format.

- [Enhanced Format]: Display pictures in a higher definition HDMI format.
- [Standard Format]: Display pictures in a standard HDMI format.

Caution

Select [Standard Format] when an input device that does not support HDMI 2.0 is connected.

- 4 When you are finished configuring settings, click [Close].

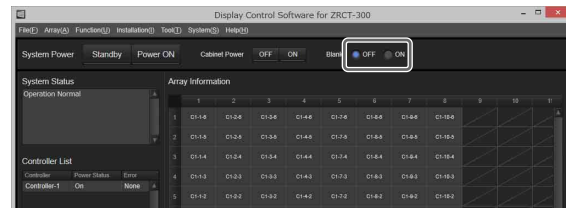
Caution

The items in the [Common Input Settings] screen cannot be configured when an input channel other than HDMI is selected in [Input Select].

Displaying a Black Picture on the Screen

When switching the video signals, use this function when you do not want to display the image at the moment of switching. Even when displaying images from multiple Display Controllers, all images are switched at the same time.

Click [ON] in [Blank] on the main screen of Display Control Software. If [OFF] is selected, images from the video signal source will be displayed.



Note

Set [Blank] to [ON] in standby mode, click [Power ON] to display the black picture on the screen, and start the system. After that, set [Blank] to [OFF] to display the images.

Adjusting the Picture Quality

Adjust the contrast, brightness, and other picture quality settings.

The settings configured on the primary controller will be applied to all the other Display Controllers, including the sub controllers. Sub controllers cannot be configured individually.

Caution

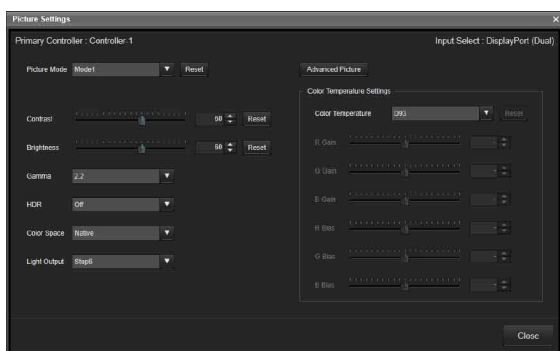
If the a primary controller is not configured via Display Control Software or the primary controller is not turned on at the time the [Picture Settings] screen is displayed, picture quality adjustment cannot be performed. In addition, the picture quality settings will not be applied to the sub controllers if they are not turned on.

1 Select [Picture Settings] in the [Array] menu on the main screen of Display Control Software.


2 Configure each setting.


The values currently configured on the primary controller are displayed on the [Picture Settings] screen.

The settings are reflected in the picture immediately after they are configured.



[Picture Mode]: Select from [Mode1] to [Mode10] to display the setting values for [Contrast] to [Color Temperature Settings]. If necessary, change the values for [Contrast] to [Color Temperature Settings]. The setting values are identical for each mode under factory default settings.

[Contrast]: Use the slider and  buttons to adjust the contrast.
Setting range: 0 to 100
Default value: 60

[Brightness]: Use the slider and  buttons to adjust the brightness.
Setting range: 0 to 100
Default value: 50

[Gamma]: Select the gamma correction value.
Default value: 2.2

Caution

- This product is not a medical device. The device cannot be used for medical examinations, even when [DICOM SIM] is selected.
- The [Gamma] settings will be disabled if [HDR] is set to a setting other than [Off].

[HDR]: Select the playback mode for HDR (high dynamic range) content.

- [Off]
- [SMPTE ST 2084 (B Series)]
- [SMPTE ST 2084 (C Series)]
- [SMPTE ST 2084 (Sim.)]
- [ITU-R BT.2100 (HLG)]: Display the HLG (Hybrid Log Gamma) image specified by recommendation ITU-R BT.2100. It takes priority over the value set in [Gamma].
- [S-Log3]
- [S-Log3 (Live)]: Display the HDR image with system gamma added to the S-Log 3 input signals. It takes priority over the value set in [Gamma].

[Color Space]: Select the color space.

- [sRGB]: Display the picture using the sRGB color space standard.
- [Native]: Display the picture with the Display Cabinet's color space of the three primary color chromaticity points.
- [AdobeRGB]: Display the picture using the Adobe RGB color space standard.
- [DCI_P3]: Display the picture using the DCI color space standard.
- [BT.2020]: Display the picture using the BT.2020 color space standard.
- [S-Gamut]/[S-Gamut3]/[SGamut3.Cine]: Display the picture using the color space defined by Sony.
- [Custom9] to [Custom10]: Display pictures using a custom color space.

Caution

[AdobeRGB], [DCI_P3], and [BT.2020] do not include the entirety of the color spaces defined by their respective standards.


[Light Output]: Select the output strength to use during low light-source output. The light-source output becomes stronger in order from [Step1] to [Step6].

[Color Temperature Settings]: Select the color temperature in [Color Temperature].

- If you selected [D93], [D65], [D50] or [DCI], proceed to step 4 .
- If you selected [D93 Custom (Offset)], [D65 Custom (Offset)], [D50 Custom (Offset)] or [DCI Custom (Offset)], proceed to step 3.

3 Configure the offset values.

These settings can only be configured when [Color Temperature Settings] is set to "Custom (Offset)" in step 2.

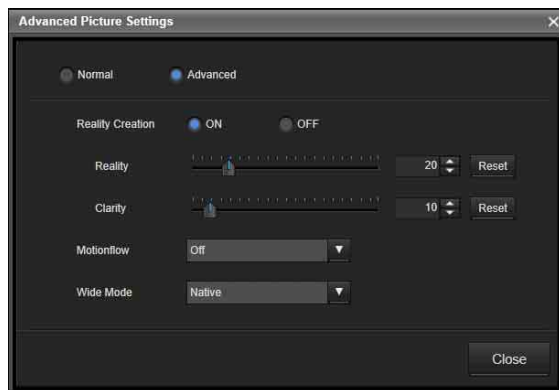
Use the slider and  buttons to adjust the contrast.

Setting range: -128 to +127

Default value: 0

4 Set the Advanced Picture function.

Select [Advanced Picture] to display the [Advanced Picture Settings] screen.




[Normal]: Display the picture faithfully according to the input signal.

[Advanced]: Change the settings of the Reality Creation, Motionflow, and Wide Mode functions.


Caution

Depending on input signal, the system may operate using the Normal picture setting.

[Reality Creation]: Adjust the definition and noise processing. (Super resolution function)

- [ON]: Change the settings of the Reality Creation function to improve the texture and sense of detail.
- [Reality]: Use the slide lever and  to

adjust the definition.

[Clarity]: Use the slide lever and  to adjust the noise processing.

- [OFF]: Turn off the Reality Creation function.

[Motionflow]

- [OFF]: Turn off the Motionflow function.
- [1] to [5]: The larger the setting value, the smoother the motion.

Caution

Depending on the picture, changing the settings may have no effect.

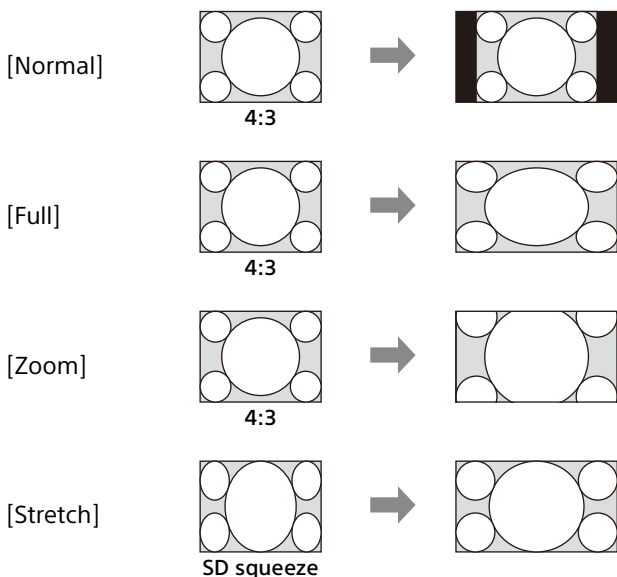
[Wide Mode]

- [Normal]: Fit an image into the screen size without being cut off while its aspect ratio is maintained.
- [Full]: Fit an image into the screen size without being cut off by changing its aspect ratio.
- [Zoom]: Cut off an image to fit into the screen size with its aspect ratio maintained.
- [Stretch]: Display standard TV signals (SD signals) in a 16:9 aspect ratio. For signals other than standard TV signals, the display will be the same as Normal.
- [Native]: Display the input image in dot-by-dot format.

Caution

- Squeezed standard TV signals are displayed properly when set to [Stretch].
- Note that compressing or stretching the screen using the Wide Mode function, etc., for purposes of profit or public viewing may infringe on the rights of authors protected under copyright law.

Display example



5 When you are finished configuring settings, click [Close].

Displaying 3D Video

Note

In this document, the signals for the left and right eyes are referred to as the L and R signals respectively.

For details, refer to the Installation Manual.

Caution

3D video display is not supported for HDMI signals.

3D frame sequential mode:

This mode alternately inputs the two video signals (L signal and R signal) to the DisplayPort connector and outputs the 3D image from the Display Cabinet.

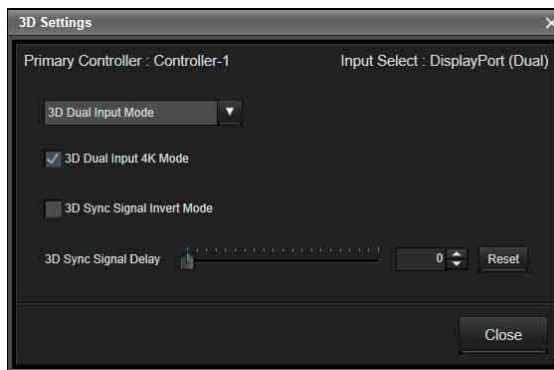
Generated 3D sync signals based on 3D sync signal inputs from the 3D SYNC IN connector are output from the 3D SYNC OUT connector according to the picture output's timing.

3D dual input mode:

This mode simultaneously inputs the two video signals (L signal and R signal) to the DisplayPort connector and outputs 3D images from the Display Cabinet.

Internally generated 3D sync signals are output from the 3D SYNC OUT connector according to the picture output's timing.


Select [3D Settings] in the [Array] menu on the main screen of Display Control Software to display the [3D Settings] screen.



3D Format: Select from the drop-down list.

[3D Dual Input 4K Mode]: Clear this checkbox for 3D video other than 4K. It works only if [3D Dual Input Mode] is set.

[3D Sync Signal Invert Mode]: Select this checkbox to invert the L and R signals.

[3D Sync Signal Delay]: Use the slider or  buttons to adjust the phase (when 3D video is not displayed properly). Moving the slider also changes the number value. Clicking [Reset] restores the default value.

Note

Inversion and phase adjustments can be configured for both mixed L/R and separated L/R. The settings are reflected in the picture immediately after they are configured.

Synchronizing with External Sync Signals

Inputting External Sync Signals

Input the external sync signal to the REF IN (external sync signals input) connector on the primary controller via a BNC cable.

Note

The following external sync signals are supported.

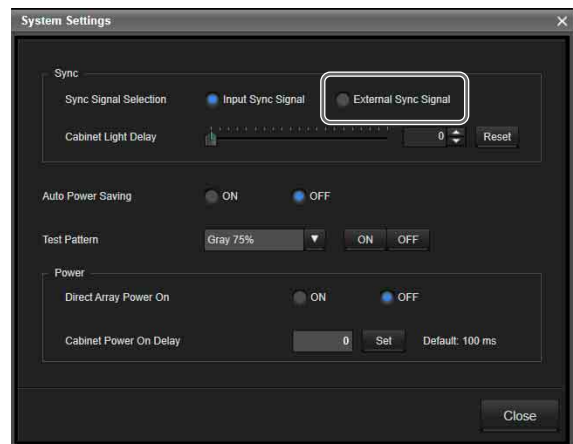
- HD tri-level sync (0.6 Vp-p/75Ω/negative sync)
- SD black burst/composite sync (0.286 Vp-p/75Ω/negative sync)

Enabling External Synchronization


Caution

If a primary controller is not configured with Display Control Software or the primary controller is not turned on, the external synchronization cannot be enabled.

- 1 Select [Function] in the main screen of Display Control Software, and then select [System Settings].
- 2 Select [External Sync Signal] in [Sync Signal Selection] under [Sync] in the [System Settings] screen.
External synchronization is enabled immediately.



Adjusting the light-up delay time for Display Cabinets

Use the slider and  buttons for [Cabinet Light Delay] under [Sync] to specify the light-up delay time (0 to 4000).

Using Network Features

Connection to the network allows you to operate the following features:

- Changing the password.
- Setting the ADCP protocol.
- Setting the support network monitoring protocol (SNMP).

Notes

- When connecting the Display Controller with the network, consult with the network administrator. The network must be secured.
- When connecting the Display Controller to a network, use a network that is built to control and regulate access from the Internet, such as a LAN. Direct connection from the Internet increases security risk.
- SONY WILL NOT BE LIABLE FOR DAMAGES OF ANY KIND RESULTING FROM A FAILURE TO IMPLEMENT PROPER SECURITY MEASURES ON TRANSMISSION DEVICES, UNAVOIDABLE DATA LEAKS RESULTING FROM TRANSMISSION SPECIFICATIONS, OR SECURITY PROBLEMS OF ANY KIND.
- Depending on the operating environment, unauthorized third parties on the network may be able to access the unit. When connecting the unit to the network, be sure to confirm that the network is protected securely.
- When using the Display Controller connected with the network, access the control window via a Web browser. It is recommended to change the password regularly.
- When the setting on the Web browser is completed, close the Web browser to log out.
- The menu displays used for the explanation below may be different depending on the model you are using.
- Supported Web browsers are Internet Explorer 11, Microsoft Edge (Chromium), Google Chrome, Safari.
- The menu displays only English.
- If the browser of your computer is set to [Use a proxy server] when you have access to the Display Controller from your computer, click the check mark to set accessing without using a proxy server.
- IPv6 is not supported.

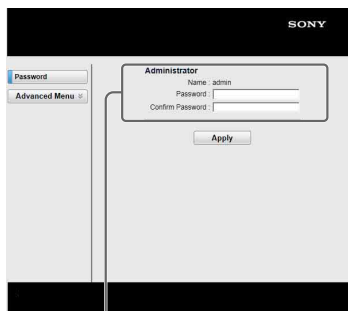
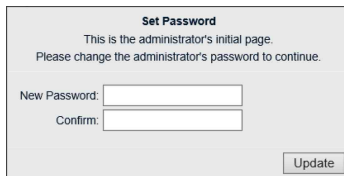
Displaying the Control Window of the Display Controller with a Web Browser

- 1 Connect the LAN cable.
- 2 Start a web browser on the computer, enter the following in the address field, then press the Enter key on your computer.
http://xxx.xxx.xxx.xxx
(xxx.xxx.xxx.xxx: IP address for the Display Controller)

When you access the Web page for the first time, input "admin" as the user name and "Adm1nS0ny" as the password in the authentication dialog.

When you log in for the first time, the window that prompts you to change the password is displayed. Follow the instructions on the screen to change the password.

The name of the administrator is preset to "admin."



Entry area for [Administrator]

The password can be changed in the Password page. When you change the password, input a new password.

The password of the administrator and user should be 8 to 16 characters that includes both alphabet and numeric characters. Alphabet is case-sensitive.

The default password "Adm1nS0ny" cannot be set as a new password.

Note

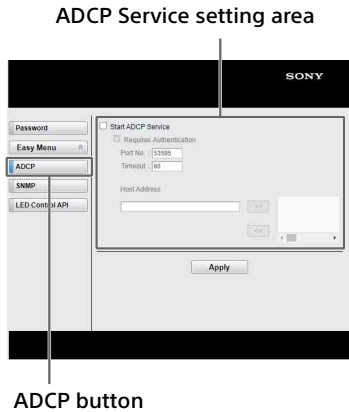
If you forget your password, consult with qualified Sony personnel.

At that time, we may contact you with a special password to reset your password. (However, since the password is for reconfiguration, the available range is limited.)

Setting the Control Protocol of the Display Controller

Change the settings for the control protocol on the Advanced Menu. Entered values will not be applied unless you click on [Apply].

1 Set ADCP.



Start ADCP Service: Set ADCP to enabled or disabled. Items for ADCP are enabled only when this function is enabled.

-Requires Authentication: Set the authentication for ADCP to enabled or disabled. The password is the same as that of the Web page administrator.

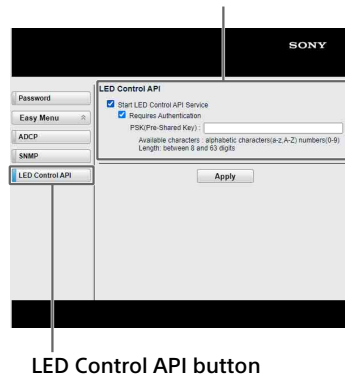
-Port No.: Input the server port of ADCP. The factory default setting is "53595."

-Timeout: Input the time (seconds) until ADCP communication is terminated in case it is disconnected. The factory default setting is "60."

-Host Address: Input the IP address that the ADCP server is allowed to receive. If no IP address is input, receiving commands will be allowed from any IP address. From the moment the IP address is input, access will be allowed only from that input IP address. For security reasons, it is recommended to input an IP address to restrict access.

2 Press the LED Control API button to open the LED Control API page.

LED Control API Service setting area



Start LED Control API Service: Set the LED Control API function on or off. The factory default setting is off.

Requires Authentication: Set the LED Control API authentication function on or off.

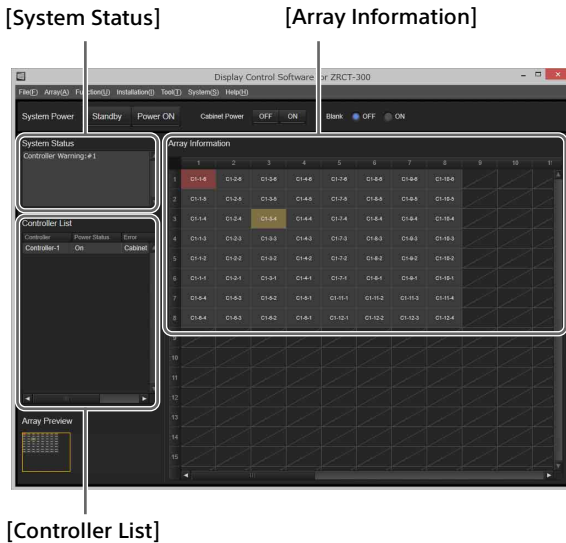
PSK (Pre-Shared Key) (for authentication): Enter the PSK (Pre-Shared Key). Only a string alphanumeric characters with a length of 8 to 63 characters can be entered.

Troubleshooting

Be sure to conduct a check before requesting assistance. If the problem persists, contact your local Sony representative.

Checking the status of the system and devices

You can check the status of the system, Display Controllers, Display Cabinets, and other devices in the main screen.



[System Status]

Displays the status of the system and Display Controllers.

- [Operation Normal]: Operation is normal.
- [Controller Error]: Device operation has stopped due to an error. The Display Controllers and Display Cabinets have entered standby mode, and picture display has stopped.

For details on the error, check the [Error] column under [Controller List].

- [Controller Warning]: Device operation continues but a warning (fan error, picture sync error, etc.) has occurred. Check the details of the warning, and resolve the problem as soon as possible. For details on the warning, check the [Error] column under [Controller List].

[Controller List]

Displays the status of each Display Controller.

[Power Status]: "-" indicates that communication with the Display Controller is not possible.

[Error]: "None" indicates that there are no errors or warning.

If an error or warning occurs, see "Error Codes" (page 24), and resolve the problem as soon as possible.

Note

You can view information on a Display Controller by double-clicking its controller number or by right-clicking it and selecting [Controller Info.].

[Array Information]

Displays the status of each Display Cabinet.

■ (gray): The Display Cabinet is turned on.

■ (black): The Display Cabinet is turned off.

■ (maroon): An error has occurred on the Display Cabinet.

■ (ocher): A warning has occurred on the Display Cabinet.

■ (black): A Display Cabinet does not exist.

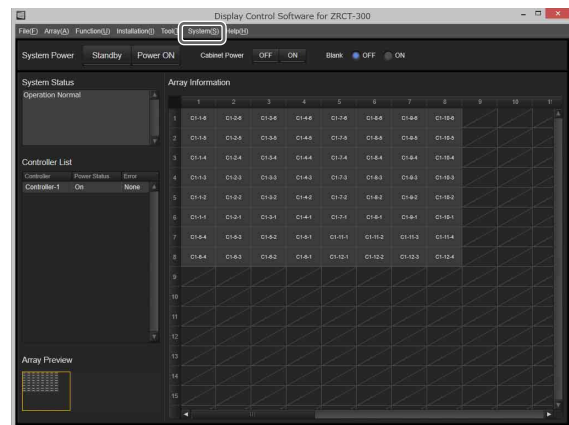
Note

You can view information on a Display Cabinet by double-clicking within its frame or by right-clicking it and selecting [Cabinet Info.].

If the controller PC is slow

By suspending the connection to the Display Controllers, you can avoid slow communication responses that may occur when using other applications, for example.

Select [Disconnect] in the [System] menu on the main screen of Display Control Software to suspend communication with the Display Controllers.



The following dialog box is displayed while communication is suspended.



To reestablish connection

Close the dialog box.

Entering the forced standby mode

If the controller PC hangs, for example, you can force Display Controllers and Display Cabinets into standby mode.

- 1 Press and hold the power switch on the Display Controller for at least 5 seconds.**
The forced standby mode is entered, and the POWER indicator lights red.

- 2 Press and hold the power switch again for about 2 seconds.**
After the POWER indicator blinks red/orange, the normal standby mode is entered.
The Display Cabinets will also enter the normal standby mode.

Error Codes

When a system error or warning occurs, verify the error code as follows.

For Display Cabinets:

Under [Array Information] in the main screen, double-click within the frame of the Display Cabinet or right-click it and select [Cabinet Info.] to display the [Cabinet Information] screen and the error code.

For Display Controllers:

Under [Controller List] in the main screen, double-click the Display Controller number or right-click it and select [Controller Info.] to display the [Controller Information] screen and the error code.

Display Cabinets

Errors

Error code	Category	Definition	Solution
100	Power	AC Power Supply/HUB Board/RCS Board	Contact your local Sony representative.
111	Temperature	Temperature (RCS)	Check the device environment and remove any obstructions from the intake vent. If the problem persists, contact your local Sony representative.
113		Temperature (Module_1~Module_8)	
150	System	Update (Cabinet FPGA)	Perform update again. If the problem persists, contact your local Sony representative.

Warnings

Warning code	Category	Definition	Solution
311	Temperature	Temperature (RCS)	Check the device environment and remove any obstructions from the intake vent. If the problem persists, contact your local Sony representative.
313		Temperature (Module_1~Module_8)	
321	Board	RCS Board	Turn the power off and turn it on again. If the problem persists, contact your local Sony representative.
330	Connection	Connection (Module_1~Module_8)	Contact your local Sony representative.
331	Communication	Communication (Video Input Signal/RS485)	Check that all cables are properly connected. If the problem persists, contact your local Sony representative.

Display Controllers

Errors

Error code	Category	Description	Solution
001	Power	CPU power supply error	Contact your local Sony representative.
002		VIF power supply error	
003		PIF power supply error	
012	Temperature	VIF temperature error	Check the device environment and remove any obstructions from the fan and intake vent. If the problem persists, contact your local Sony representative.
013		PIF temperature error	
023	Board determination	PIF determination error	Contact your local Sony representative.
050	System	System version error	

Warnings

Warning code	Category	Description	Solution
212	VIF	Temperature warning	Check the device environment and remove any obstructions from the fan and intake vent. If the problem persists, contact your local Sony representative.
213	PIF		
214	PS		
215	Fan (Front)	Rotation stop warning / speed warning	Check the device environment and remove any foreign objects that may be obstructing the fan. If the problem persists, contact your local Sony representative.
216	Fan (Rear)		
230	System	Controller configuration data mismatch warning	Check the LED pitch size of the display cabinet, the installation conditions and wiring conditions including the model names, and the settings of the Display Control Software. If there is no problem, turn the power back on. If the problem persists, contact your local Sony representative.
233	PIF	VIF signal connection warning / Link connection warning / Sync connection warning	
240	System	Update warning (CPU / VIF / PIF)	Perform update again. If the problem persists, contact your local Sony representative.
401	Auto Power Saving	Auto power saving warning	Input a signal to the selected input, or set [System Setting] - [Auto Power Saving] to [OFF] in Display Control Software (without a signal, the unit will automatically be in standby mode to save power).

Cleaning and Storage

Display Cabinets

Caution

Do not wet the surface of the Display Cabinets.

Daily cleaning

- Use a soft anti-static cloth that does not produce lint when cleaning the surface of the Display Cabinets. (Recommended cloth: savina MX wiping cloth made by KB SEIREN, LTD.)
- Use ethyl alcohol (near 100%) to clean stubborn stains on the surface. Do not use any other solvents.
- Use commercially available anti-static dust blowers to clean joints.

Storage (for transportation)

- Make sure the Display Cabinets are completely dry before packing them.
- Store the Display Cabinets in dry, well-ventilated environments.

Display Controllers

Daily cleaning

- Use a cloth that has been dampened with a neutral detergent and thoroughly wrung out to wipe the device clean. Never use solvents, such as benzene and thinners.

Storage

- Do not store in environments where condensation may occur inside the device.

Signal Formats

The system supports the following video signals.

2D Inputs

DisplayPort (Single Input)

Resolution	Input frame rate ¹⁾	Input bit length	Input color sampling
3840 × 2160 ²⁾	60p/50p/ 30p/25p/ 24p	8-/10-bit	RGB 4:4:4
2560 × 1440	60p	8-/10-bit	RGB 4:4:4
1920 × 2160	120p ²⁾ / 100p ²⁾ / 60p/30p/ 25p ²⁾ / 24p ²⁾	8-/10-bit	RGB 4:4:4
1920 × 1080	120p/100p/ 60p/50p	8-/10-bit	RGB 4:4:4

DisplayPort (Dual Input)

Resolution	Input frame rate ¹⁾	Input bit length	Input color sampling
3840 × 2160 ²⁾	120p/100p	8-/10-bit	RGB 4:4:4

HDMI port ³⁾

Resolution	Input frame rate ⁴⁾	Input bit length	Input color sampling
4096 × 2160	60p/50p/ 30p/25p/ 24p	12-bit	YCbCr 4:2:2
3840 × 2160	60p/50p	8-bit	RGB 4:4:4 ⁵⁾ / YCbCr 4:4:4 ⁵⁾ / YCbCr 4:2:0
3840 × 2160	60p/50p	10-/12-bit	YCbCr 4:2:2 ⁵⁾
3840 × 2160	30p/25p/ 24p	10-/12-bit	RGB 4:4:4 ^{5) 6)} / YCbCr 4:4:4 ^{5) 6)}
3840 × 2160	30p/25p/ 24p	8-bit	RGB 4:4:4/ YCbCr 4:4:4
3840 × 2160	30p/25p/ 24p	12-bit	YCbCr 4:2:2
1920 × 1080	60p/50p	8-/10-/12-bit	RGB 4:4:4/ YCbCr 4:4:4
1920 × 1080	60p/50p	12-bit	YCbCr 4:2:2
1920 × 1080	30p/25p/ 24p	8-/10-/12-bit	RGB 4:4:4/ YCbCr 4:4:4
1920 × 1080	30p/25p/ 24p	12-bit	YCbCr 4:2:2
1280 × 720	60p/50p	8-/10-/12-bit	RGB 4:4:4/ YCbCr 4:4:4
1280 × 720	60p/50p	12-bit	YCbCr 4:2:2
1024 × 768	60p	8-/10-/12-bit	RGB 4:4:4/ YCbCr 4:4:4
1024 × 768	60p	12-bit	YCbCr 4:2:2
800 × 600	60p	8-/10-/12-bit	RGB 4:4:4/ YCbCr 4:4:4
800 × 600	60p	12-bit	YCbCr 4:2:2
720 × 480	60p	8-/10-/12-bit	RGB 4:4:4/ YCbCr 4:4:4
720 × 480	60p	12-bit	YCbCr 4:2:2
720 × 576	50p	8-/10-/12-bit	RGB 4:4:4/ YCbCr 4:4:4
720 × 576	50p	12-bit	YCbCr 4:2:2
640 × 480	60p	8-/10-/12-bit	RGB 4:4:4/ YCbCr 4:4:4
640 × 480	60p	12-bit	YCbCr 4:2:2

^{*1} 1,000/1,001 frame rate is also supported for 120p/60p/30p/24p.

^{*2} Refer to the Installation Manual for details on input signals and settings.

^{*3} Converted to RGB 4:4:4, 8-/10-bit for display (8-bit is displayed for 8-bit inputs only).

^{*4} 1,000/1,001 frame rate is also supported for 60p/30p/24p.

^{*5} Use a Premium High Speed HDMI cable when using this input signal.

^{*6} Converted to YCbCr 4:2:2, 10-/12-bit first, and then converted to RGB 4:4:4, 10-bit for display.

3D Inputs

Frame sequential mode

DisplayPort (Single Input)

Resolution	Input frame rate ¹⁾	Input bit length	Input color sampling
3840 × 2160	60p ²⁾	8-/10-bit	RGB 4:4:4
1920 × 2160	120p ²⁾ / 100p ²⁾ /60p	8-/10-bit	RGB 4:4:4
1920 × 1080	120p/100p/ 60p	8-/10-bit	RGB 4:4:4

DisplayPort (Dual Input)

Resolution	Input frame rate ¹⁾	Input bit length	Input color sampling
3840 × 2160 ²⁾	120p/100p	8-/10-bit	RGB 4:4:4

3D dual input mode

DisplayPort (Dual Input)

Resolution	Input frame rate ¹⁾	Input bit length	Input color sampling
3840 × 2160 ²⁾	60p/50p	8-/10-bit	RGB 4:4:4
1920 × 2160	60p/50p	8-/10-bit	RGB 4:4:4
1920 × 1080	60p/50p	8-/10-bit	RGB 4:4:4

^{*1} 1,000/1,001 frame rate is also supported for 120p/60p/30p/24p.

^{*2} Refer to the Installation Manual for details on input signals and settings.

Supported Signal Formats for a Single Controller

Resolution	Frequency	Color sampling	DisplayPort input			
			Single Input		Dual Input	
			DP1 or DP2		DP1 and DP2	
			SST	MST	SST	MST
3840 × 2160	120/119.88	RGB 4:4:4	-	-	-	8-/10-bit (Square Division)
	100	RGB 4:4:4	-	-	-	8-/10-bit (Square Division)
	60/59.94	RGB 4:4:4	-	8-/10-bit (V split)	8-/10-bit (V split)	8-/10-bit (Square Division)
	50	RGB 4:4:4	-	8-/10-bit (V split)	8-/10-bit (V split)	8-/10-bit (Square Division)
	30	-	8-/10-bit	8-/10-bit (V split)	8-/10-bit (V split)	8-/10-bit (Square Division)
	29.97	-	-	8-/10-bit (V split)	8-/10-bit (V split)	8-/10-bit (Square Division)
	25	RGB 4:4:4	-	8-/10-bit (V split)	8-/10-bit (V split)	-
	24/23.98	RGB 4:4:4	-	8-/10-bit (V split)	8-/10-bit (V split)	-
2560 × 1440	60	RGB 4:4:4	8-/10-bit	-	-	-
1920 × 1080	120/119.88	RGB 4:4:4	8-/10-bit	-	-	-
	100	RGB 4:4:4	8-/10-bit	-	-	-
	60/59.94	RGB 4:4:4	8-/10-bit	-	-	-
	50	RGB 4:4:4	8-/10-bit	-	-	-
	30/29.97	RGB 4:4:4	-	-	-	-
	25	RGB 4:4:4	-	-	-	-
	24/23.98	RGB 4:4:4	-	-	-	-

Resolution	Frequency	Color sampling	HDMI input
			Single input
			HDMI1 or HDMI2
3840 × 2160	60/59.94	RGB 4:4:4/YCbCr 4:4:4/YCbCr 4:2:0	8-bit
		YCbCr 4:2:2	12-bit
	50	RGB 4:4:4/YCbCr 4:4:4/YCbCr 4:2:0	8-bit
		YCbCr 4:2:2	12-bit
	30/29.97	RGB 4:4:4/YCbCr 4:4:4	8-/10-/12-bit
		YCbCr 4:2:2	12-bit
	25	RGB 4:4:4/YCbCr 4:4:4	8-/10-/12-bit
		YCbCr 4:2:2	12-bit
	24/23.98	RGB 4:4:4/YCbCr 4:4:4	8-/10-/12-bit
		YCbCr 4:2:2	12-bit
1920 × 1080	60/59.94	RGB 4:4:4/YCbCr 4:4:4	8-/10-/12-bit
		YCbCr 4:2:2	12-bit
	50	RGB 4:4:4/YCbCr 4:4:4	8-/10-/12-bit
		YCbCr 4:2:2	12-bit
	30/29.97	RGB 4:4:4/YCbCr 4:4:4	8-/10-/12-bit
		YCbCr 4:2:2	12-bit
	25	RGB 4:4:4/YCbCr 4:4:4	8-/10-/12-bit
		YCbCr 4:2:2	12-bit
	24/23.98	RGB 4:4:4/YCbCr 4:4:4	8-/10-/12-bit
		YCbCr 4:2:2	12-bit
1280 × 720	60/59.94	RGB 4:4:4/YCbCr 4:4:4	8-/10-/12-bit
		YCbCr 4:2:2	12-bit
	50	RGB 4:4:4/YCbCr 4:4:4	8-/10-/12-bit
		YCbCr 4:2:2	12-bit
1024 × 768	60/59.94	RGB 4:4:4/YCbCr 4:4:4	8-/10-/12-bit
		YCbCr 4:2:2	12-bit
800 × 600	60/59.94	RGB 4:4:4/YCbCr 4:4:4	8-/10-/12-bit
		YCbCr 4:2:2	12-bit
720 × 480	60/59.94	RGB 4:4:4/YCbCr 4:4:4	8-/10-/12-bit
		YCbCr 4:2:2	12-bit
720 × 576	50	RGB 4:4:4/YCbCr 4:4:4	8-/10-/12-bit
		YCbCr 4:2:2	12-bit
640 × 480	60/59.94	RGB 4:4:4/YCbCr 4:4:4	8-/10-/12-bit
		YCbCr 4:2:2	12-bit

NOTICES AND LICENCES FOR SOFTWARE USED IN THIS PRODUCT

Notification of MIT

libffi
Copyright (c) 1996-2014
Anthony Green, Red Hat, Inc
and others.

ncurses
Copyright (c) 1998-2012,2018
Free Software Foundation, Inc.

mtdev
Copyright (c) 2010 Henrik
Rydberg
<rydberg@euromail.se>
Copyright (c) 2010 Canonical
Ltd.

expat
Copyright (c) 1998-2000 Thai
Open Source Software Center
Ltd and Clark Cooper
Copyright (c) 2001-2017 Expat
maintainers

libxml2
Copyright (C) 1998-2012 Daniel
Veillard. All Rights Reserved.

Parson
Copyright (c) 2012 - 2014
Krzysztof Gabis

http-parser
http_parser.c is based on src/
http/nginx_http_parse.c from
NGINX copyright Igor Sysoev.
Additional changes are licensed
under the same terms as NGINX
and copyright Joyent, Inc. and
other Node contributors. All
rights reserved.

Permission is hereby granted,
free of charge, to any person
obtaining a copy of this
software and associated
documentation files (the
"Software"), to deal in the
Software without restriction,
including without limitation the

rights to use, copy, modify,
merge, publish, distribute,
sublicense, and/or sell copies
of the Software, and to permit
persons to whom the Software
is furnished to do so, subject to
the following conditions:

The above copyright notice and
this permission notice shall be
included in all copies or
substantial portions of the
Software.

THE SOFTWARE IS PROVIDED
"AS IS", WITHOUT WARRANTY
OF ANY KIND, EXPRESS OR
IMPLIED, INCLUDING BUT NOT
LIMITED TO THE WARRANTIES
OF MERCHANTABILITY, FITNESS
FOR A PARTICULAR PURPOSE
AND NONINFRINGEMENT. IN NO
EVENT SHALL THE AUTHORS OR
COPYRIGHT HOLDERS BE
LIABLE FOR ANY CLAIM,
DAMAGES OR OTHER LIABILITY,
WHETHER IN AN ACTION OF
CONTRACT, TORT OR
OTHERWISE, ARISING FROM,
OUT OF OR IN CONNECTION
WITH THE SOFTWARE OR THE
USE OR OTHER DEALINGS IN
THE SOFTWARE.

=====

The Academic Free License v. 2.1

This Academic Free License (the
"License") applies to any
original work of authorship (the
"Original Work") whose owner
(the "Licensor") has placed the
following notice immediately
following the copyright notice
for the Original Work:

Licensed under the Academic
Free License version 2.1

1) Grant of Copyright License.
Licensor hereby grants You a
worldwide, royalty-free, non-
exclusive, perpetual,
sublicenseable license to do the
following:
a) to reproduce the Original
Work in copies;
b) to prepare derivative works
("Derivative Works") based
upon the Original Work;
c) to distribute copies of the
Original Work and Derivative
Works to the public;
d) to perform the Original Work
publicly; and
e) to display the Original Work
publicly.

2) Grant of Patent License.
Licensor hereby grants You a
world-wide, royalty-free, non-
exclusive, perpetual,
sublicenseable license, under
patent claims owned or
controlled by the Licensor that
are embodied in the Original
Work as furnished by the
Licensor, to make, use, sell and
offer for sale the Original Work
and Derivative Works.

3) Grant of Source Code License.
The term "Source Code" means
the preferred form of the
Original Work for making
modifications to it and all
available documentation
describing how to modify the
Original Work. Licensor hereby
agrees to provide a machine-
readable copy of the Source
Code of the Original Work along
with each copy of the Original
Work that Licensor distributes.
Licensor reserves the right to
satisfy this obligation by
placing a machine-readable
copy of the Source Code in an
information repository

reasonably calculated to permit inexpensive and convenient access by You for as long as Licensor continues to distribute the Original Work, and by publishing the address of that information repository in a notice immediately following the copyright notice that applies to the Original Work.

4) Exclusions From License Grant. Neither the names of Licensor, nor the names of any contributors to the Original Work, nor any of their trademarks or service marks, may be used to endorse or promote products derived from this Original Work without express prior written permission of the Licensor. Nothing in this License shall be deemed to grant any rights to trademarks, copyrights, patents, trade secrets or any other intellectual property of Licensor except as expressly stated herein. No patent license is granted to make, use, sell or offer to sell embodiments of any patent claims other than the licensed claims defined in Section 2. No right is granted to the trademarks of Licensor even if such marks are included in the Original Work. Nothing in this License shall be interpreted to prohibit Licensor from licensing under different terms from this License any Original Work that Licensor otherwise would have a right to license.

5) This section intentionally omitted.

6) Attribution Rights. You must retain, in the Source Code of any Derivative Works that You create, all copyright, patent or trademark notices from the Source Code of the Original Work, as well as any notices of licensing and any descriptive text identified therein as an

"Attribution Notice." You must cause the Source Code for any Derivative Works that You create to carry a prominent Attribution Notice reasonably calculated to inform recipients that You have modified the Original Work.

7) Warranty of Provenance and Disclaimer of Warranty.

Licensor warrants that the copyright in and to the Original Work and the patent rights granted herein by Licensor are owned by the Licensor or are sublicensed to You under the terms of this License with the permission of the contributor(s) of those copyrights and patent rights. Except as expressly stated in the immediately preceding sentence, the Original Work is provided under this License on an "AS IS" BASIS and WITHOUT WARRANTY, either express or implied, including, without limitation, the warranties of NONINFRINGEMENT, MERCHANTABILITY or FITNESS FOR A PARTICULAR PURPOSE. THE ENTIRE RISK AS TO THE QUALITY OF THE ORIGINAL WORK IS WITH YOU. This DISCLAIMER OF WARRANTY constitutes an essential part of this License. No license to Original Work is granted hereunder except under this disclaimer.

8) Limitation of Liability. Under no circumstances and under no legal theory, whether in tort (including negligence), contract, or otherwise, shall the Licensor be liable to any person for any direct, indirect, special, incidental, or consequential damages of any character arising as a result of this License or the use of the Original Work including, without limitation, damages for loss of goodwill, work stoppage, computer failure or malfunction, or any

and all other commercial damages or losses. This limitation of liability shall not apply to liability for death or personal injury resulting from Licensor's negligence to the extent applicable law prohibits such limitation. Some jurisdictions do not allow the exclusion or limitation of incidental or consequential damages, so this exclusion and limitation may not apply to You.

9) Acceptance and Termination. If You distribute copies of the Original Work or a Derivative Work, You must make a reasonable effort under the circumstances to obtain the express assent of recipients to the terms of this License.

Nothing else but this License (or another written agreement between Licensor and You) grants You permission to create Derivative Works based upon the Original Work or to exercise any of the rights granted in Section 1 herein, and any attempt to do so except under the terms of this License (or another written agreement between Licensor and You) is expressly prohibited by U.S. copyright law, the equivalent laws of other countries, and by international treaty. Therefore, by exercising any of the rights granted to You in Section 1 herein, You indicate Your acceptance of this License and all of its terms and conditions.

10) Termination for Patent Action. This License shall terminate automatically and You may no longer exercise any of the rights granted to You by this License as of the date You commence an action, including a cross-claim or counterclaim, against Licensor or any licensee alleging that the Original Work infringes a patent. This termination provision shall not apply for an action alleging

patent infringement by combinations of the Original Work with other software or hardware.

11) Jurisdiction, Venue and Governing Law. Any action or suit relating to this License may be brought only in the courts of a jurisdiction wherein the Licensor resides or in which Licensor conducts its primary business, and under the laws of that jurisdiction excluding its conflict-of-law provisions. The application of the United Nations Convention on Contracts for the International Sale of Goods is expressly excluded. Any use of the Original Work outside the scope of this License or after its termination shall be subject to the requirements and penalties of the U.S. Copyright Act, 17 U.S.C. A§ 101 et seq., the equivalent laws of other countries, and international treaty. This section shall survive the termination of this License.

12) Attorneys Fees. In any action to enforce the terms of this License or seeking damages relating thereto, the prevailing party shall be entitled to recover its costs and expenses, including, without limitation, reasonable attorneys' fees and costs incurred in connection with such action, including any appeal of such action. This section shall survive the termination of this License.

13) Miscellaneous. This License represents the complete agreement concerning the subject matter hereof. If any provision of this License is held to be unenforceable, such provision shall be reformed only to the extent necessary to make it enforceable.

14) Definition of "You" in This License. "You" throughout this

License, whether in upper or lower case, means an individual or a legal entity exercising rights under, and complying with all of the terms of, this License. For legal entities, "You" includes any entity that controls, is controlled by, or is under common control with you. For purposes of this definition, "control" means (i) the power, direct or indirect, to cause the direction or management of such entity, whether by contract or otherwise, or (ii) ownership of fifty percent (50%) or more of the outstanding shares, or (iii) beneficial ownership of such entity.

15) Right to Use. You may use the Original Work in all ways not otherwise restricted or conditioned by this License or by law, and Licensor promises not to interfere with or be responsible for such uses by You. This license is Copyright (C) 2003-2004 Lawrence E. Rosen. All rights reserved. Permission is hereby granted to copy and distribute this license without modification. This license may not be modified without the express written permission of its copyright owner.

--
END OF ACADEMIC FREE LICENSE.

HAL

HAL is licensed to you under your choice of the Academic Free License version 2.1, or the GNU General Public License version 2. Both licenses are included here. Some individual source code files and/ or binaries may be under the GPL only or under the LGPG. Each source code file is marked with the proper copyright information.

D-Bus

D-Bus is licensed to you under your choice of the Academic Free License version 2.1, or the GNU General Public License version 2 (or, at your option any later version). Both licenses are included here. Some of the standalone binaries are under the GPL only; in particular, but not limited to, tools/dbus-cleanup-sockets.c and test/decode-gcov.c. Each source code file is marked with the proper copyright information - if you find a file that isn't marked please bring it to our attention.

=====

boost

Boost Software License -
Version 1.0 - August 17th, 2003

Permission is hereby granted, free of charge, to any person or organization obtaining a copy of the software and accompanying documentation covered by this license (the "Software") to use, reproduce, display, distribute, execute, and transmit the Software, and to prepare derivative works of the Software, and to permit third-parties to whom the Software is furnished to do so, all subject to the following:

The copyright notices in the Software and this entire statement, including the above license grant, this restriction and the following disclaimer, must be included in all copies of the Software, in whole or in part, and all derivative works of the Software, unless such copies or derivative works are solely in the form of machine-executable object code generated by a source language processor.

THE SOFTWARE IS PROVIDED "AS IS", WITHOUT WARRANTY OF ANY KIND, EXPRESS OR IMPLIED, INCLUDING BUT NOT LIMITED TO THE WARRANTIES OF MERCHANTABILITY, FITNESS FOR A PARTICULAR PURPOSE, TITLE AND NONINFRINGEMENT. IN NO EVENT SHALL THE COPYRIGHT HOLDERS OR ANYONE DISTRIBUTING THE SOFTWARE BE LIABLE FOR ANY DAMAGES OR OTHER LIABILITY, WHETHER IN CONTRACT, TORT OR OTHERWISE, ARISING FROM, OUT OF OR IN CONNECTION WITH THE SOFTWARE OR THE USE OR OTHER DEALINGS IN THE SOFTWARE.

=====

bzip2

Copyright (C) 1996-2010 Julian R Seward. All rights reserved.

Redistribution and use in source and binary forms, with or without modification, are permitted provided that the following conditions are met:

1. Redistributions of source code must retain the above copyright notice, this list of conditions and the following disclaimer.
2. The origin of this software must not be misrepresented; you must not claim that you wrote the original software. If you use this software in a product, an acknowledgment in the product documentation would be appreciated but is not required.
3. Altered source versions must be plainly marked as such, and must not be misrepresented as being the original software.
4. The name of the author may not be used to endorse or promote products derived from

this software without specific prior written permission.

THIS SOFTWARE IS PROVIDED BY THE AUTHOR ``AS IS" AND ANY EXPRESS OR IMPLIED WARRANTIES, INCLUDING, BUT NOT LIMITED TO, THE IMPLIED WARRANTIES OF MERCHANTABILITY AND FITNESS FOR A PARTICULAR PURPOSE ARE DISCLAIMED. IN NO EVENT SHALL THE AUTHOR BE LIABLE FOR ANY DIRECT, INDIRECT, INCIDENTAL, SPECIAL, EXEMPLARY, OR CONSEQUENTIAL DAMAGES (INCLUDING, BUT NOT LIMITED TO, PROCUREMENT OF SUBSTITUTE GOODS OR SERVICES; LOSS OF USE, DATA, OR PROFITS; OR BUSINESS INTERRUPTION) HOWEVER CAUSED AND ON ANY THEORY OF LIABILITY, WHETHER IN CONTRACT, STRICT LIABILITY, OR TORT (INCLUDING NEGLIGENCE OR OTHERWISE) ARISING IN ANY WAY OUT OF THE USE OF THIS SOFTWARE, EVEN IF ADVISED OF THE POSSIBILITY OF SUCH DAMAGE.

=====

dhcpcd

Copyright (c) 2004-2018 by Internet Systems Consortium, Inc. ("ISC")
Copyright (c) 1995-2003 by Internet Software Consortium

THE SOFTWARE IS PROVIDED "AS IS" AND ISC DISCLAIMS ALL WARRANTIES WITH REGARD TO THIS SOFTWARE INCLUDING ALL IMPLIED WARRANTIES OF MERCHANTABILITY AND FITNESS. IN NO EVENT SHALL ISC BE LIABLE FOR ANY SPECIAL, DIRECT, INDIRECT, OR CONSEQUENTIAL DAMAGES OR ANY DAMAGES WHATSOEVER RESULTING FROM LOSS OF USE, DATA OR PROFITS, WHETHER IN

AN ACTION OF CONTRACT, NEGLIGENCE OR OTHER TORTIOUS ACTION, ARISING OUT OF OR IN CONNECTION WITH THE USE OR PERFORMANCE OF THIS SOFTWARE.

Internet Systems Consortium, Inc.
950 Charter Street
Redwood City, CA 94063
<info@isc.org>
<https://www.isc.org/>

=====

SOFTWARE DEVELOPED BY THE OPENSLL PROJECT FOR USE IN THE SSL TOOLKIT

Copyright (c) 1998-2018 The OpenSSL Project. All rights reserved.

Redistribution and use in source and binary forms, with or without modification, are permitted provided that the following conditions are met:
1. Redistributions of source code must retain the above copyright notice, this list of conditions and the following disclaimer.

2. Redistributions in binary form must reproduce the above copyright notice, this list of conditions and the following disclaimer in the documentation and/or other materials provided with the distribution.

3. All advertising materials mentioning features or use of this software must display the following acknowledgment: "This product includes software developed by the OpenSSL Project for use in the OpenSSL Toolkit. (<<http://www.openssl.org/>>)"

4. The names "OpenSSL Toolkit" and "OpenSSL Project" must not be used to endorse or promote products derived from this software without prior written permission. For written permission, please contact openssl-core@openssl.org.

5. Products derived from this software may not be called "OpenSSL" nor may "OpenSSL" appear in their names without prior written permission of the OpenSSL Project.

6. Redistributions of any form whatsoever must retain the following acknowledgment: "This product includes software developed by the OpenSSL Project for use in the OpenSSL Toolkit (<<http://www.openssl.org/>>)"

THIS SOFTWARE IS PROVIDED BY THE OpenSSL PROJECT "AS IS" AND ANY EXPRESSED OR IMPLIED WARRANTIES, INCLUDING, BUT NOT LIMITED TO, THE IMPLIED WARRANTIES OF MERCHANTABILITY AND FITNESS FOR A PARTICULAR PURPOSE ARE DISCLAIMED. IN NO EVENT SHALL THE OpenSSL PROJECT OR ITS CONTRIBUTORS BE LIABLE FOR ANY DIRECT, INDIRECT, INCIDENTAL, SPECIAL, EXEMPLARY, OR CONSEQUENTIAL DAMAGES (INCLUDING, BUT NOT LIMITED TO, PROCUREMENT OF SUBSTITUTE GOODS OR SERVICES; LOSS OF USE, DATA, OR PROFITS; OR BUSINESS INTERRUPTION) HOWEVER CAUSED AND ON ANY THEORY OF LIABILITY, WHETHER IN CONTRACT, STRICT LIABILITY, OR TORT (INCLUDING NEGLIGENCE OR OTHERWISE) ARISING IN ANY WAY OUT OF THE USE OF THIS SOFTWARE, EVEN IF ADVISED OF THE POSSIBILITY OF SUCH DAMAGE. This product includes cryptographic software written

by Eric Young (eay@cryptsoft.com). This product includes software written by Tim Hudson (tjh@cryptsoft.com).

Original SSLeay License

Copyright (C) 1995-1998 Eric Young (eay@cryptsoft.com) All rights reserved.

This package is an SSL implementation written by Eric Young (eay@cryptsoft.com). The implementation was written so as to conform with Netscapes SSL.

This library is free for commercial and non-commercial use as long as the following conditions are adhered to. The following conditions apply to all code found in this distribution, be it the RC4, RSA, lhash, DES, etc., code; not just the SSL code. The SSL documentation included with this distribution is covered by the same copyright terms except that the holder is Tim Hudson (tjh@cryptsoft.com).

Copyright remains Eric Young's, and as such any Copyright notices in the code are not to be removed. If this package is used in a product, Eric Young should be given attribution as the author of the parts of the library used. This can be in the form of a textual message at program startup or in documentation (online or textual) provided with the package.

Redistribution and use in source and binary forms, with or without modification, are permitted provided that the following conditions are met:

1. Redistributions of source code must retain the copyright notice, this list of conditions and the following disclaimer.
2. Redistributions in binary form must reproduce the above

copyright notice, this list of conditions and the following disclaimer in the documentation and/or other materials provided with the distribution.

3. All advertising materials mentioning features or use of this software must display the following acknowledgement: "This product includes cryptographic software written by Eric Young (eay@cryptsoft.com)". The word 'cryptographic' can be left out if the routines from the library being used are not cryptographic related:-).

4. If you include any Windows specific code (or a derivative thereof) from the apps directory (application code) you must include an acknowledgement: "This product includes software written by Tim Hudson (tjh@cryptsoft.com)".

THIS SOFTWARE IS PROVIDED BY ERIC YOUNG "AS IS" AND ANY EXPRESS OR IMPLIED WARRANTIES, INCLUDING, BUT NOT LIMITED TO, THE IMPLIED WARRANTIES OF MERCHANTABILITY AND FITNESS FOR A PARTICULAR PURPOSE ARE DISCLAIMED. IN NO EVENT SHALL THE AUTHOR OR CONTRIBUTORS BE LIABLE FOR ANY DIRECT, INDIRECT, INCIDENTAL, SPECIAL, EXEMPLARY, OR CONSEQUENTIAL DAMAGES (INCLUDING, BUT NOT LIMITED TO, PROCUREMENT OF SUBSTITUTE GOODS OR SERVICES; LOSS OF USE, DATA, OR PROFITS; OR BUSINESS INTERRUPTION) HOWEVER CAUSED AND ON ANY THEORY OF LIABILITY, WHETHER IN CONTRACT, STRICT LIABILITY, OR TORT (INCLUDING NEGLIGENCE OR OTHERWISE) ARISING IN ANY WAY OUT OF

THE USE OF THIS SOFTWARE, EVEN IF ADVISED OF THE POSSIBILITY OF SUCH DAMAGE.

The license and distribution terms for any publically available version or derivative of this code cannot be changed. i.e. this code cannot simply be copied and put under another distribution license [including the GNU Public License.]

=====

Python(R)

Python® is a registered trademark of the Python Software Foundation.

=====

tcpdump

License: BSD

Redistribution and use in source and binary forms, with or without modification, are permitted provided that the following conditions are met:
1. Redistributions of source code must retain the above copyright notice, this list of conditions and the following disclaimer.

2. Redistributions in binary form must reproduce the above copyright notice, this list of conditions and the following disclaimer in the documentation and/or other materials provided with the distribution.

3. The names of the authors may not be used to endorse or promote products derived from this software without specific prior written permission.

THIS SOFTWARE IS PROVIDED ``AS IS'' AND WITHOUT ANY EXPRESS OR IMPLIED WARRANTIES, INCLUDING, WITHOUT LIMITATION, THE IMPLIED WARRANTIES OF MERCHANTABILITY AND FITNESS FOR A PARTICULAR PURPOSE.

=====

lighttpd

Copyright (c) 2004, Jan Kneschke, incremental All rights reserved.

Redistribution and use in source and binary forms, with or without modification, are permitted provided that the following conditions are met:
- Redistributions of source code must retain the above copyright notice, this list of conditions and the following disclaimer.

- Redistributions in binary form must reproduce the above copyright notice, this list of conditions and the following disclaimer in the documentation and/or other materials provided with the distribution.

- Neither the name of the 'incremental' nor the names of its contributors may be used to endorse or promote products derived from this software without specific prior written permission.

THIS SOFTWARE IS PROVIDED BY THE COPYRIGHT HOLDERS AND CONTRIBUTORS "AS IS" AND ANY EXPRESS OR IMPLIED WARRANTIES, INCLUDING, BUT NOT LIMITED TO, THE IMPLIED WARRANTIES OF MERCHANTABILITY AND FITNESS FOR A PARTICULAR PURPOSE ARE DISCLAIMED. IN NO EVENT SHALL THE COPYRIGHT OWNER OR

CONTRIBUTORS BE LIABLE FOR ANY DIRECT, INDIRECT, INCIDENTAL, SPECIAL, EXEMPLARY, OR CONSEQUENTIAL DAMAGES (INCLUDING, BUT NOT LIMITED TO, PROCUREMENT OF SUBSTITUTE GOODS OR SERVICES; LOSS OF USE, DATA, OR PROFITS; OR BUSINESS INTERRUPTION) HOWEVER CAUSED AND ON ANY THEORY OF LIABILITY, WHETHER IN CONTRACT, STRICT LIABILITY, OR TORT (INCLUDING NEGLIGENCE OR OTHERWISE) ARISING IN ANY WAY OUT OF THE USE OF THIS SOFTWARE, EVEN IF ADVISED OF THE POSSIBILITY OF SUCH DAMAGE.

=====

libpcap

License: BSD

Redistribution and use in source and binary forms, with or without modification, are permitted provided that the following conditions are met:
1. Redistributions of source code must retain the above copyright notice, this list of conditions and the following disclaimer.

2. Redistributions in binary form must reproduce the above copyright notice, this list of conditions and the following disclaimer in the documentation and/or other materials provided with the distribution.

3. The names of the authors may not be used to endorse or promote products derived from this software without specific prior written permission.

THIS SOFTWARE IS PROVIDED ``AS IS'' AND WITHOUT ANY EXPRESS OR IMPLIED WARRANTIES, INCLUDING,

WITHOUT LIMITATION, THE IMPLIED WARRANTIES OF MERCHANTABILITY AND FITNESS FOR A PARTICULAR PURPOSE.

=====

pcre

PCRE LICENCE

PCRE is a library of functions to support regular expressions whose syntax and semantics are as close as possible to those of the Perl 5 language. Release 8 of PCRE is distributed under the terms of the "BSD" licence, as specified below. The documentation for PCRE, supplied in the "doc" directory, is distributed under the same terms as the software itself. The basic library functions are written in C and are freestanding. Also included in the distribution is a set of C++ wrapper functions, and a justin-time compiler that can be used to optimize pattern matching. These are both optional features that can be omitted when the library is built.

THE BASIC LIBRARY FUNCTIONS

Written by: Philip Hazel
Email local part: ph10
Email domain: cam.ac.uk

University of Cambridge
Computing Service, Cambridge,
England.

Copyright (c) 1997-2018
University of Cambridge
All rights reserved.

**PCRE JUST-IN-TIME
COMPILATION SUPPORT**

-

Written by: Zoltan Herczeg
Email local part: hzmester
Email domain: freemail.hu

Copyright(c) 2010-2018 Zoltan Herczeg
All rights reserved.

**STACK-LESS JUST-IN-TIME
COMPILER**

Written by: Zoltan Herczeg
Email local part: hzmester
Email domain: freemail.hu
Copyright(c) 2010-2018 Zoltan Herczeg
All rights reserved.

THE C++ WRAPPER FUNCTIONS

Contributed by: Google Inc.
Copyright (c) 2007-2012, Google Inc.
All rights reserved.

THE "BSD" LICENCE

Redistribution and use in source and binary forms, with or without modification, are permitted provided that the following conditions are met:

- * Redistributions of source code must retain the above copyright notice, this list of conditions and the following disclaimer.
- * Redistributions in binary form must reproduce the above copyright notice, this list of conditions and the following disclaimer in the documentation and/or other materials provided with the distribution.
- * Neither the name of the University of Cambridge nor the name of Google Inc. nor the names of their contributors may be used to endorse or promote products derived from this software without specific prior written permission.

THIS SOFTWARE IS PROVIDED BY THE COPYRIGHT HOLDERS AND CONTRIBUTORS "AS IS" AND ANY EXPRESS OR IMPLIED WARRANTIES, INCLUDING, BUT NOT LIMITED TO, THE IMPLIED WARRANTIES OF MERCHANTABILITY AND

FITNESS FOR A PARTICULAR PURPOSE ARE DISCLAIMED. IN NO EVENT SHALL THE COPYRIGHT OWNER OR CONTRIBUTORS BE LIABLE FOR ANY DIRECT, INDIRECT, INCIDENTAL, SPECIAL, EXEMPLARY, OR CONSEQUENTIAL DAMAGES (INCLUDING, BUT NOT LIMITED TO, PROCUREMENT OF SUBSTITUTE GOODS OR SERVICES; LOSS OF USE, DATA, OR PROFITS; OR BUSINESS INTERRUPTION) HOWEVER CAUSED AND ON ANY THEORY OF LIABILITY, WHETHER IN CONTRACT, STRICT LIABILITY, OR TORT (INCLUDING NEGLIGENCE OR OTHERWISE) ARISING IN ANY WAY OUT OF THE USE OF THIS SOFTWARE, EVEN IF ADVISED OF THE POSSIBILITY OF SUCH DAMAGE.

End

=====

portmap

Copyright (c) 1990 The Regents of the University of California.
All rights reserved.

Redistribution and use in source and binary forms, with or without modification, are permitted provided that the following conditions are met:

1. Redistributions of source code must retain the above copyright notice, this list of conditions and the following disclaimer.

2. Redistributions in binary form must reproduce the above copyright notice, this list of conditions and the following disclaimer in the documentation and/or other materials provided with the distribution.

3. All advertising materials mentioning features or use of this software must display the

following acknowledgement:
This product includes software developed by the University of California, Berkeley and its contributors.

4. Neither the name of the University nor the names of its contributors may be used to endorse or promote products derived from this software without specific prior written permission.

THIS SOFTWARE IS PROVIDED BY THE REGENTS AND CONTRIBUTORS ``AS IS'' AND ANY EXPRESS OR IMPLIED WARRANTIES, INCLUDING, BUT NOT LIMITED TO, THE IMPLIED WARRANTIES OF MERCHANTABILITY AND FITNESS FOR A PARTICULAR PURPOSE ARE DISCLAIMED. IN NO EVENT SHALL THE REGENTS OR CONTRIBUTORS BE LIABLE FOR ANY DIRECT, INDIRECT, INCIDENTAL, SPECIAL, EXEMPLARY, OR CONSEQUENTIAL DAMAGES (INCLUDING, BUT NOT LIMITED TO, PROCUREMENT OF SUBSTITUTE GOODS OR SERVICES; LOSS OF USE, DATA, OR PROFITS; OR BUSINESS INTERRUPTION) HOWEVER CAUSED AND ON ANY THEORY OF LIABILITY, WHETHER IN CONTRACT, STRICT LIABILITY, OR TORT (INCLUDING NEGLIGENCE OR OTHERWISE) ARISING IN ANY WAY OUT OF THE USE OF THIS SOFTWARE, EVEN IF ADVISED OF THE POSSIBILITY OF SUCH DAMAGE.

Sun RPC is a product of Sun Microsystems, Inc. and is provided for unrestricted use provided that this legend is included on all tape media and as a part of the software program in whole or part. Users may copy or modify Sun RPC without charge, but are not authorized to license or distribute it to anyone else

except as part of a product or program developed by the user.

SUN RPC IS PROVIDED AS IS WITH NO WARRANTIES OF ANY KIND INCLUDING THE WARRANTIES OF DESIGN, MERCHANTABILITY AND FITNESS FOR A PARTICULAR PURPOSE, OR ARISING FROM A COURSE OF DEALING, USAGE OR TRADE PRACTICE.

Sun RPC is provided with no support and without any obligation on the part of Sun Microsystems, Inc. to assist in its use, correction, modification or enhancement.

SUN MICROSYSTEMS, INC. SHALL HAVE NO LIABILITY WITH RESPECT TO THE INFRINGEMENT OF COPYRIGHTS, TRADE SECRETS OR ANY PATENTS BY SUN RPC OR ANY PART THEREOF.

In no event will Sun Microsystems, Inc. be liable for any lost revenue or profits or other special, indirect and consequential damages, even if Sun has been advised of the possibility of such damages.

Sun Microsystems, Inc.
2550 Garcia Avenue
Mountain View, California
94043

=====

zlib

Copyright (C) 1995-2017 Jean-loup Gailly and Mark Adler

This software is provided 'as-is', without any express or implied warranty. In no event will the authors be held liable for any damages arising from the use of this software.

Permission is granted to anyone to use this software for

any purpose, including commercial applications, and to alter it and redistribute it freely, subject to the following restrictions:

1. The origin of this software must not be misrepresented; you must not claim that you wrote the original software. If you use this software in a product, an acknowledgment in the product documentation would be appreciated but is not required.
2. Altered source versions must be plainly marked as such, and must not be misrepresented as being the original software.
3. This notice may not be removed or altered from any source distribution.

